










The Nova 3[®] is a supplied air, loose-fitting, heavy industry respirator. Designed for all forms of abrasive blasting and other industrial applications where there is a need for respiratory, eye, face, head, and hearing protection.



Nova 3 Headtops for Supplied (Compressed) Air

Part #	Description	Certifications
POPULAR CHOICE NV3-711-50	 Nova 3 Blast Respirator with Constant Flow Valve Package also includes: ■ Constant flow valve ■ Low flow indicator ■ Nylon cape ■ SAR breathing tube.	EN14594 EN166 EN397
POPULAR CHOICE NV3-715-50	 Nova 3 Blast Respirator with Climate Control Package also includes: ■ C40 [™] Climate Control Device ■ Low flow indicator ■ Nylon cape ■ SAR breathing tube.	EN14594 EN166 EN397

Nova 3 Accessories

Part #	Description	Certification
03-502	 C40 [™] Climate Control Device - CE	s EN14594
07-701	 RPB [®] Leather Gloves	
07-755-S	RPB [®] Heavy Duty Blast Suit - Small	
07-755-M	RPB [®] Heavy Duty Blast Suit - Medium	
07-755-L	RPB [®] Heavy Duty Blast Suit - Large	
07-755-XL	RPB [®] Heavy Duty Blast Suit - X Large	
07-755-XXL	RPB [®] Heavy Duty Blast Suit - XX Large	
07-755-XXXL	RPB [®] Heavy Duty Blast Suit - XXX Large	
07-755-XXXXL	RPB [®] Heavy Duty Blast Suit - XXXX Large	
07-761	 RPB [®] Knee Pads - pair.	
09-502-G	 L4 [™] Blast Light Assembly* - Global power connections.	
09-903	 Nova 3 [®] Talk [™] In-Helmet Communication Upgrade Kit* - radio adaptor sold separately.	

Nova 3 Consumables

Part #	Description	Certifications
NV2021B	SAR Breathing Tube	
POPULAR CHOICE NV3-722	Inner Lens (pk 10)	
NV3-722-T	Inner Lens - Tinted (pk 10)	
POPULAR CHOICE NV3-724	Outer Lens (pk 50)	
POPULAR CHOICE NV3-725	Tear-off Lens (pk 50)	
POPULAR CHOICE NV3-745	Cassette Lens (pk 20) <i>- each cassette includes 5x tear-offs and 1x outer lens.</i>	
NV3-746	Mesh Screen (pk 2)	

Nova Talk Parts

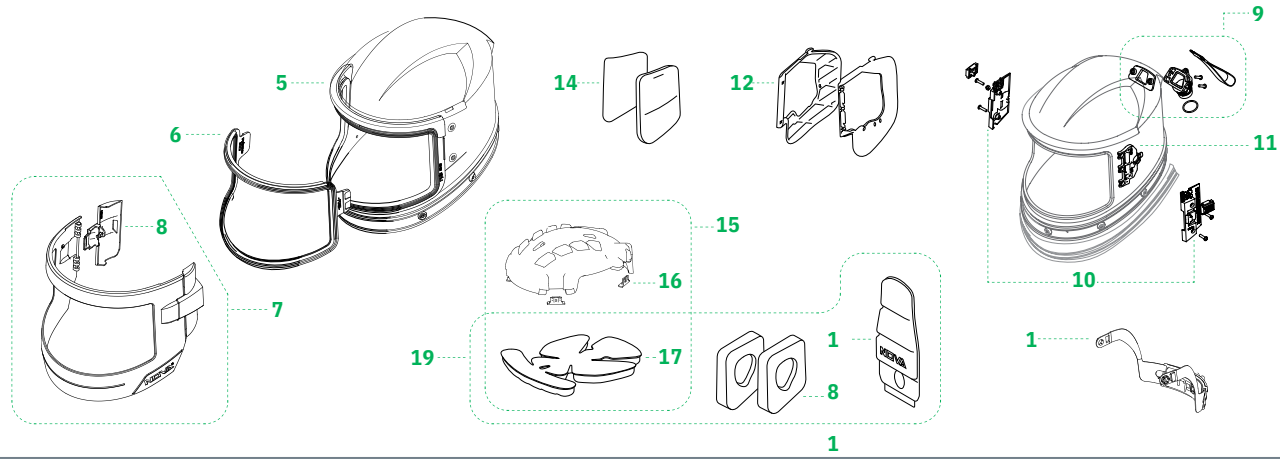
Part #	Description	Certifications
09-913	Push to Talk Button	
09-916	R-TEX High Noise Headset <i>- includes PTT, radio not supplied.</i>	
09-930	Motorola Connection Cable - <i>two-pin.</i>	
09-931	Motorola Connection Cable - <i>multi-pin.</i>	
09-932	Motorola Connection Cable - <i>multi-pin.</i>	
09-933	Kenwood Connection Cable - <i>two-pin.</i>	
09-934	Motorola Connection Cable - <i>multi-pin.</i>	
09-938	Cable for VX-261	
09-939	Cable for Apex Icom IC-F4002	
NV3-733TK	Nova 3 Talk™ Side Padding Covers <i>- 5 pairs.</i>	

L4 Light Parts

Part #	Description	Certifications
07-122	Cable and Hose Clamp	
09-021-EU	Power Cable - <i>EU.</i>	
09-021-UK	Power Cable - <i>UK.</i>	
09-512	L4™ Light and Mount Kit <i>- includes 09-520.</i>	
09-520	Mounting Clip	
09-522	Outer Lens (pk 10)	
09-525	Battery Charger <i>- Power Cable not included.</i>	
09-532-2	Battery Pack	

Nova 3® Respirator

Nova 3 Parts



Part # / Description
1 07-900 Adjustable Head Support
- NV2012 Inner Bib
- NV2030 Low Flow Indicator Assembly
- NV2041 Domes - 8 sets.
5 NV3-721 Inner Gasket
6 NV3-723 Inner Lens Frame
7 NV3-726 Visor Kit
- NV3-727/8 Visor Mount Kit - includes 4pcs FS-40 nuts and 4pcs FS-46 screws.
8 NV3-727-2 Hinge Lock
9 NV3-729 Air Inlet Kit
- NV3-729-2 Low Flow Indicator Adapter
11 NV3-730 Padding Connectors - pair.
- NV3-731 Side Padding Frames - pair.
12 NV3-732- (A05, A10, A15 or A20) Side Padding Foam & Covers
- NV3-732- (A05, A10, A15 or A20) Side Padding Foam & Covers - available in 5mm, 10mm, 15mm or 20mm.

Part # / Description
14 NV3-733 Side Padding Covers - 5 pairs.
15 NV3-734 Head Liner Kit - includes NV3-734-1.
16 NV3-734-1 Head Liner Clips (pk 4)
17 NV3-735 Head Liner Foam Padding
18 NV3-735-1 Neck Pad
19 NV3-736- (A05, A10, A15 or A20) Hygiene Kit - available in 5mm, 10mm, 15mm or 20mm.
- NV3-750 Nylon Respirator Cape*
- NV3-751 Extra Length Nylon Respirator Cape*
- NV3-752 Leather Respirator Cape*
- NV3-753-HD Extra Length, Heavy Duty Leather Respirator Cape*
- NV3-754 Blast Jacket, Size XL*
- NV3-755 Blast Jacket, Size XXL*
- NV3-759 Cape Cover Band

Includes NV2012 Inner Bib.

